

CAT6/CAT6a High-density Data Center Patch Cables

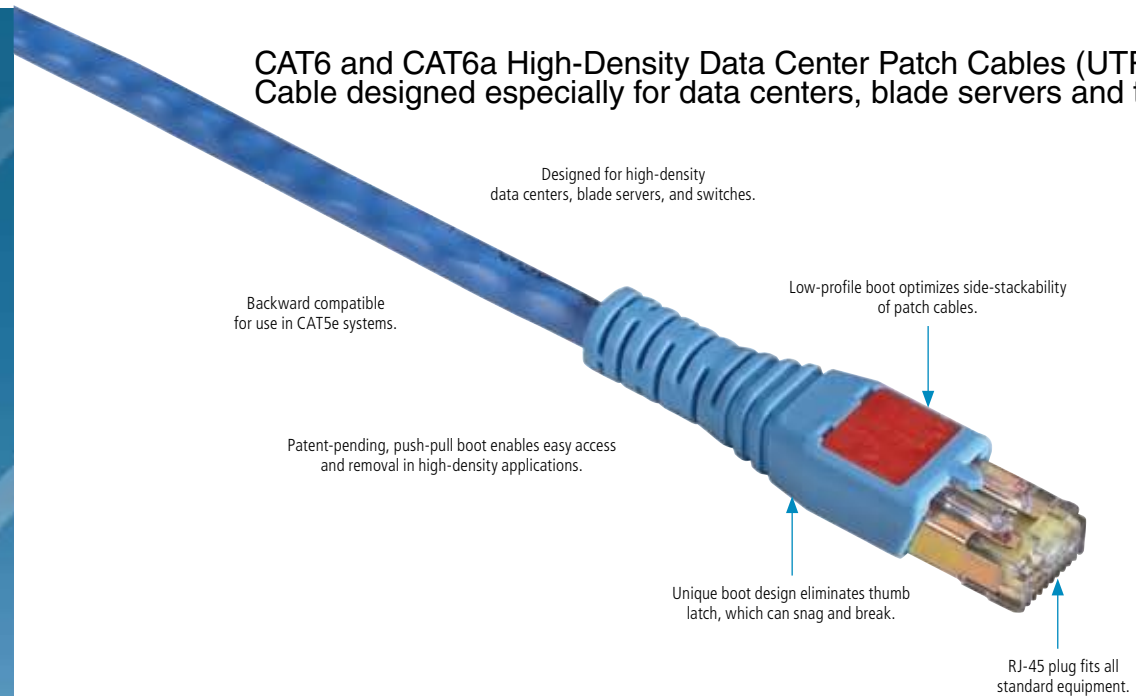
These easy-to-insert CAT6 and CAT6a cables feature a low-profile RJ-45 boot design to fit small spaces.



FEATURES

- » Patent-pending, push-pull boot design makes it easy to insert and remove cables in high-density data center applications such as blade servers, patch panels, and switches.
- » Slim, low-profile boot design enables side-by-side stackability.
- » RJ-45 plugs fit all standard RJ-45 equipment.
- » Design eliminates the thumb tab, which can snag and break.
- » Boot provides excellent bend relief.
- » Backwards compatible with lower category systems.

CAT6 and CAT6a High-Density Data Center Patch Cables (UTP) Cable designed especially for data centers, blade servers and tight spaces.



OVERVIEW

CAT6 Cable

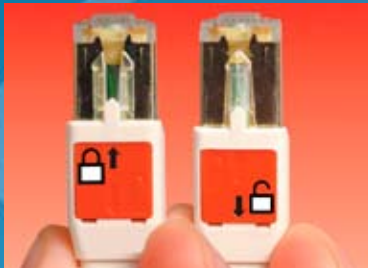
- 250-MHz cable supports Gigabit Ethernet.
- CAT6 cable meets ANSI/TIA/EIA-568-B.2-1 and ISO/IEC 11801:2002 specifications.
- Backward compatible with CAT5e.
- For specifications, see blackbox.com.

CAT6a Cable

- 500-MHz cable supports 10GBASE-T and beyond.
- Exceeds all pending 10GbE requirements, including alien crosstalk.
- Dual jacket construction provides excellent alien crosstalk performance.
- Fully shielded to meet all CAT6a performance specifications.
- Small inner cable diameter improves bend radius and flexibility.
- Backward compatible with CAT6 and CAT5e.



Unique push-pull plug fits all standard RJ-45 equipment.



Simply push the boot forward to latch into the outlet. Then pull back to release. No thumbtaps to break.



Ultra-thin for tight-fitting applications, such as blade servers, patch panels, and switches.

Item		Code	
CAT6 High-Density Data Center Patch Cable, RJ-45, T568B, Stranded, LSOH			
3-ft. (0.9-m)	Gray Blue White	EVNSL6-70-BS-0003 EVNSL6-71-BS-0003 EVNSL6-80-BS-0003	
5-ft. (1.5-m)	Gray Blue White	EVNSL6-70-BS-0005 EVNSL6-71-BS-0005 EVNSL6-80-BS-0005	
7-ft. (2.1-m)	Gray Blue White	EVNSL6-70-BS-0007 EVNSL6-71-BS-0007 EVNSL6-80-BS-0007	
10-ft. (3.0-m)	Gray Blue White	EVNSL6-70-BS-0010 EVNSL6-71-BS-0010 EVNSL6-80-BS-0010	
15-ft. (4.5-m)	Gray Blue White	EVNSL6-70-BS-0015 EVNSL6-71-BS-0015 EVNSL6-80-BS-0015	
20-ft. (6.0-m)	Gray Blue White	EVNSL6-70-BS-0020 EVNSL6-71-BS-0020 EVNSL6-80-BS-0020	

Item		Code	
CAT6a High-Density Data Center Patch Cable, RJ-45, T568B, Stranded, LSOH			
3-ft. (0.9-m)	Gray Blue White	EVNSL6A-70-BS-0003 EVNSL6A-71-BS-0003 EVNSL6A-80-BS-0003	
5-ft. (1.5-m)	Gray Blue White	EVNSL6A-70-BS-0005 EVNSL6A-71-BS-0005 EVNSL6A-80-BS-0005	
7-ft. (2.1-m)	Gray Blue White	EVNSL6A-70-BS-0007 EVNSL6A-71-BS-0007 EVNSL6A-80-BS-0007	
10-ft. (3.0-m)	Gray Blue White	EVNSL6A-70-BS-0010 EVNSL6A-71-BS-0010 EVNSL6A-80-BS-0010	
15-ft. (4.5-m)	Gray Blue White	EVNSL6A-70-BS-0015 EVNSL6A-71-BS-0015 EVNSL6A-80-BS-0015	
20-ft. (6.0-m)	Gray Blue White	EVNSL6A-70-BS-0020 EVNSL6A-71-BS-0020 EVNSL6A-80-BS-0020	

Why Buy From Black Box? Exceptional Value. Exceptional Tech Support. Period.

Recognize any of these situations?

- You wait more than 30 minutes to get through to a vendor's tech support.
- The so-called "tech" can't help you or gives you the wrong answer.
- You don't have a purchase order number and the tech refuses to help you.
- It's 9 p.m. and you need help, but your vendor's tech support line is closed.

According to a survey by *Data Communications* magazine, 90% of network managers surveyed say that getting the technical support they need is extremely important when choosing a vendor. But even though network managers pay anywhere from 10 to 20% of their overall purchase price for a basic service and support contract, the technical support and service they receive falls far short of their expectations—and certainly isn't worth what they paid.

At Black Box, we guarantee the best value and the best support. You can even consult our Technical Support Experts before you buy if you need help selecting just the right component for your application. Don't waste time and money—call Black Box today.