

Remote Console Manager Quick Start Guide

Quick Start Guide

This quick start guide helps you through installation, configuration, and local operation. For more details, refer to the user manual.



TRADEMARKS USED IN THIS MANUAL

Black Box and the Double Diamond logo are registered trademarks of BB Technologies, Inc.

Cisco is a registered trademark of Cisco Technology, Inc.

Linux is a registered trademark of Linus Torvalds.

Nagios is a registered trademark of Nagios Enterprises.

Any other trademarks mentioned in this manual are acknowledged to be the property of the trademark owners.

Follow the steps listed below to get started:

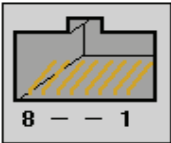
Step 1: Check kit contents.

- LES1202A-R2, LES1203A-M-R2, or LES1204A-R2 Remote Console Manager
- This printed quick start guide
- (2) UTP cables
- (1) DB9F-RJ-45 adapter straight-pinned
- (1) DB9F-RJ-45 adapter crossover-pinned
- Universal input 12-VDC power pack

NOTE: To download the user manual, SDT connector software and quick start guide, and/or PortShare software and quick start guide, visit the Black Box Web site (blackbox.com) and enter LES1202A in the search bar.

Step 2: Connect the hardware.

- Plug the power pack into the AC power receptacle and connect the DC power cable to the 9-12 VDC power socket on the Remote Console Manager.
- Connect the LAN port to your network.
- Connect your serial devices to the SERIAL ports. Your Remote Console Manager has two, three, or four RJ-45 serial ports. The RJ-45 serial connectors have Cisco® serial pinouts:



	PIN	SIGNAL	DEFINITION
1 ←—CTS	1	CTS	Clear To Send
2 ←—DSR	2	DSR	Data Set Ready
3 ←—RD	3	RXD	Receive Data
4 —GND	4	GND	Signal Ground
5 —GND	5	GND	Signal Ground
6 —>TD	6	TXD	Transmit Data
7 —>DTR	7	DTR	Data Terminal Ready
8 —>RTS	8	RTS	Request To Send

Figure 1. Cisco serial pinouts.

NOTE: If you have a LES1203A-M-R2 and plan to use out-of-band (OoB) dial-in access, connect the internal modem to the phone line.

Remote Console Manager Quick Start Guide

Step 3: Set up the remote console manager.

The default remote console manager IP address is 192.168.0.1 (subnet mask 255.255.255.0). With a Web browser on any computer that is connected through the LAN to the serial device server:

- Enter `https://192.168.0.1` into the address bar.

NOTE: The LAN-connected computer must have an IP address in the same network range (192.168.0.xxx) as the remote console manager. If this is not convenient, you can use the ARP Ping command to set the IP address (refer to the user manual for details). The remote console manager also has its DHCP client enabled by default, so it will automatically accept any network IP address assigned by any DHCP server on your network—and will then respond at both 192.168.0.1 and its DHCP address.

- Log in using the default system user name: root, and the default password: default. A Welcome screen listing the basic configuration steps is displayed.
- Select “System: Administration,” enter and confirm a new system password, and click “Apply.”

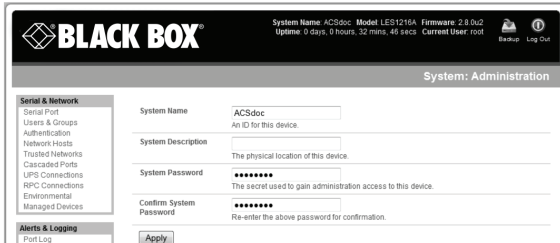


Figure 2. System: Administration screen.

- To assign your remote console manager a static IP address or to permanently enable DHCP, select “System: IP” then “Network Interface” and check “DHCP” or “Static” for configuration method.

NOTE: By default, only HTTPS and SSH access is enabled to the Remote Console Manager itself. Use Service Access menu on System: Firewall to change this, and to change access privileges for connected serial and network devices. Similarly, use the Forwarding & Networking menu to permit remote IP access to devices on Network or Management LAN.

Step 4: Configure serial and network devices.

- Select “Serial & Network: Serial Port,” which will display the label, mode, and protocol options currently set for the serial port. By default, all the serial ports, except Port 1, are set to console server mode (see the user’s manual for other modes).

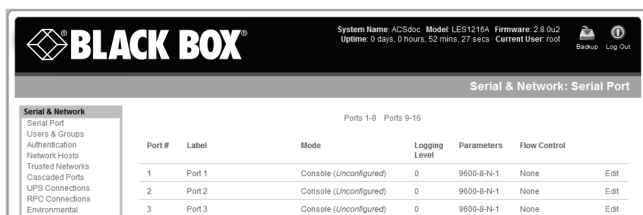


Figure 3. Serial & Network: Serial Port screen.

- To configure a serial port, click “Edit.”
- Configure the common settings (baud rate, parity, data bits, stop bits, and flow control) to match those of the serial device being controlled.
- Select the console server protocols (Telnet, SSH, TCP, and RFC2217) that will be used for the data connection to the serial port.

NOTE: Port 1 is configured by default in Local Console (modem) mode. Use the crossover-pinned DB9F-RJ-45 adapter and UTP cable to connect to a terminal emulator application on your PC’s serial COM port. If you plan to use OoB dial-in access, connect this serial port to an external modem as covered in detail in the user manual.

- Click “Apply.”
- To enable access through the remote console manager to a locally networked computer (referred to as a host), select “Serial & Network: Network Hosts” and click “Add Host.”

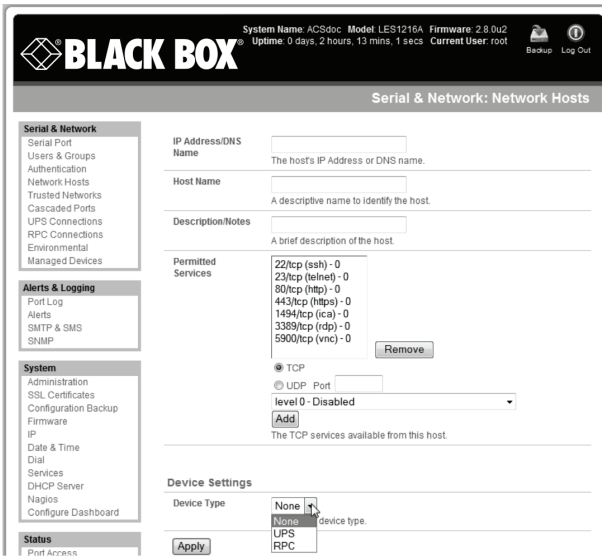


Figure 4. Serial & Network: Network Hosts screen.

- Enter the IP address/DNS name of the host.
- Edit the permitted services used for accessing this host, for example, HTTPS (TCP port 443), VNC (TCP port 5900), or add custom TCP or UDP port numbers—only the services specified here are tunneled through to the host. All other services are blocked.
- Specify the level of information to be logged and monitored for each host access.
- Click “Apply.”

Step 5: Add new users.

NOTE: We recommend that you set up a new Administrator user (in the admin group with full access privileges) and log in as this new user for all ongoing administration functions (rather than continuing as root).

- For each new user, select “Serial & Network: Users & Groups” and click “Add User.”

- Enter a username and enter and confirm a password, and nominate the accessible hosts and accessible ports the user is allowed to access.

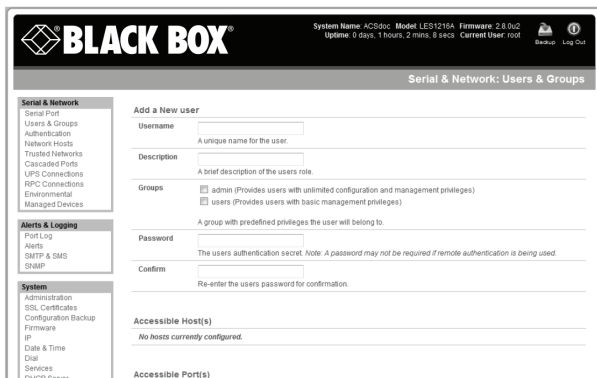


Figure 5. Serial & Network: Users & Groups screen.

- To grant limited access to the management console, check the “User” group. To grant full access to the management console, check the “Admin” group. By default, the user is granted no management console access.
- Click “Apply.”

NOTE: The Remote Console Manager comes with a default certificate for initial configuration purposes only. You will need to direct your browser to (temporarily) proceed and accept this untrusted certificate. It is recommended as soon as possible thereafter you generate and install a new trusted certificate. To produce the unique CSR and later upload the newly issued certificate, select System: SSL Certificates.

Step 6: Custom setup.

The Remote Console Manager family has various models that may require some custom setup:

- LES1203A-M-R2 has an internal modem that can be configured for dial-in access (or dial-out failover connection) using the Internal Modem Port tab under System: Dial menu.
- LES1204A-3G-R2 comes with an internal 3G cellular modem— and its own Quick Start Guide.

Remote Console Manager Quick Start Guide

Step 7: Advanced configurations.

The console server offers many more advanced functions, including:

- The Alerts & Logging: Alerts facility monitors serial ports, hosts, user logins, UPSs (uninterruptible power supplies), and RPCs (remote power controllers such as PDUs and IPMI devices). A broad selection of trigger events (such as data patterns, temperature, or battery levels) can be specified. When triggered, a warning e-mail, SMS, Nagios®, or SNMP alert is sent to a nominated destination.
- Extensive management of UPSs and RPCs using Open Source NUT and Powerman tools. The Manage: Power facility enables both administrators and regular users to monitor and control attached PDU power strips, and servers with embedded IPMI BMCs.
- Historical logs of all communications with serial and network-attached devices, system activity, UPS and PDU power status, environmental status, etc. The level of logging is set as ports and devices are configured. Alerts & Logging: Port Log allows this history to be saved locally or remotely. Logs can be viewed from the Status and Manage menus.
- Other advanced features, such as serial port cascading, remote authentication, trusted networks, secure tunneling, Nagios distributed monitoring, and the command line interface are covered in detail in the user manual.

NOTE: To download the user manual from the Web site:

1. Go to www.blackbox.com
2. Enter the product code (LES1202A-R2, LES1203A-M-R2, or LES1204A-R2) in the search box:
3. Click on the “Resources” tab on the product page, and select the document you wish to download.

NOTE: Also on the Black Box Web site, you will find the SDT Connector software tool. Once you have configured the console server, this tool provides you with secure, point-and-click access to the console server and all the attached devices. Refer to the provided SDT Connector Quick Start for details on setting up remote management of the console server and connected devices.

NOTE: Also on the Black Box Web site, you will also find PortShare software, which enables applications on your Windows® or Linux® PC/server/virtual server to control serial port devices attached to a Remote Console Manager. To use PortShare, configure the Remote Console Manager serial port in console server mode and specify the appropriate protocol (either RFC2117 or RAW) to be used (see the user's manual for details).

Black Box Tech Support: FREE! Live. 24/7.

Tech support the
way it should be.



Great tech support is just 60 seconds away at
724-746-5500 or blackbox.com.



About Black Box

Black Box Network Services is your source an extensive range of networking and infrastructure products. You'll find everything from cabinets and racks and power and surge protection products to media converters and Ethernet switches all supported by free, live 24/7 Tech support available in 60 seconds or less.

© Copyright 2015. All rights reserved.